

# Installation Instructions

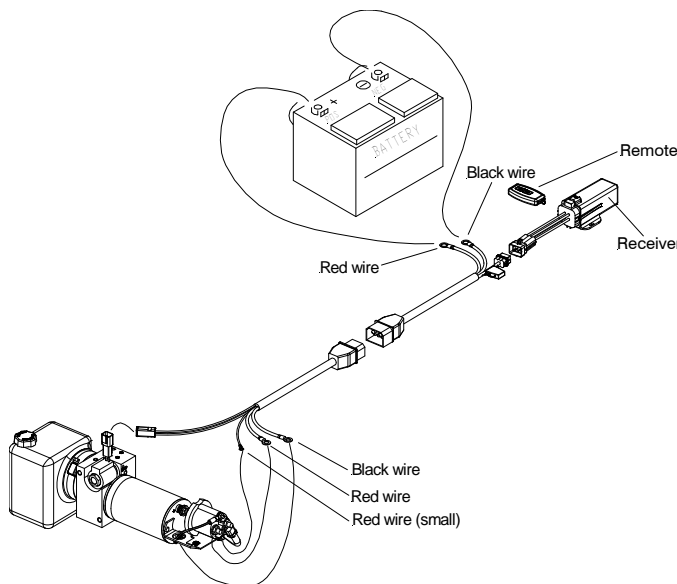
## Part No. 22890 Wireless Controller Kit

### Battery Replacement, Installation & Operation

Part No.	Qty	Description
22890	1	Hydraulic Auto Angle Wireless Kit
22891	1	• Wireless Remote
22892	1	• Hydraulic Wireless Receiver
22988	1	•• Replacement battery kit (2) CR2016 3V

1. Connect Receiver to the wiring harness. See figure 1.
2. Remove cover from the Receiver.
3. Press the white button on Receiver until a small red LED illuminates next to the white button. The LED should flash once then stay illuminated. See figure 2.
4. Press the U (up) button on the Remote for 1 second ( A blue LED should illuminate on the Remote. If it does not illuminate or is dim replace the Remote batteries, See Figure 4) and confirm the red LED on the Receiver turns off. See figure 3.
5. The Receiver and Remote are now paired.
6. Confirm plow functionality by pressing UP and Down buttons on the Remote.
7. Replace Receiver cover and use zip tie to secure.

**Figure 1**



**Figure 2**



**Figure 3**



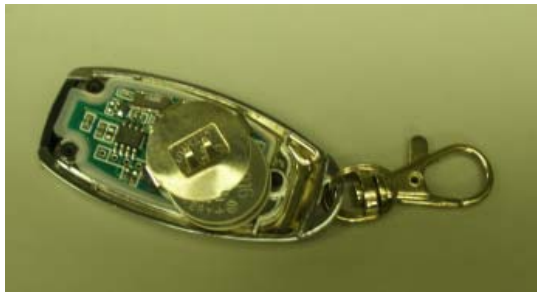
**Figure 4**



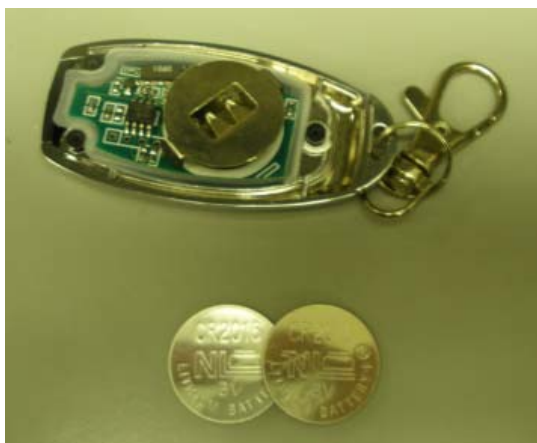
1.) Remove the three screws on the back of the controller using a P0 size phillips screw driver.



2.) Remove the the back cover of the controller.



3.) Remove the two batteries from the remote by sliding batteries out of the battery holder.



4.) Stack the new CR2016 batteries as shown with (+) facing up on both and slide back into battery holder. Re-attach cover with the three phillips screws. Go to step two on previous page to sync the remote to the receiver.

**Note: Batteries should be replaced once per year and the remote should be kept in a warm environment when not in use to extend battery life.**

**The Home Plow assumes no responsibility for installations not made in accordance with these instructions.**

The Home Plow reserves the right, under its continuing product improvement program, to change construction or design details, specifications and prices without notice or without incurring any obligation.